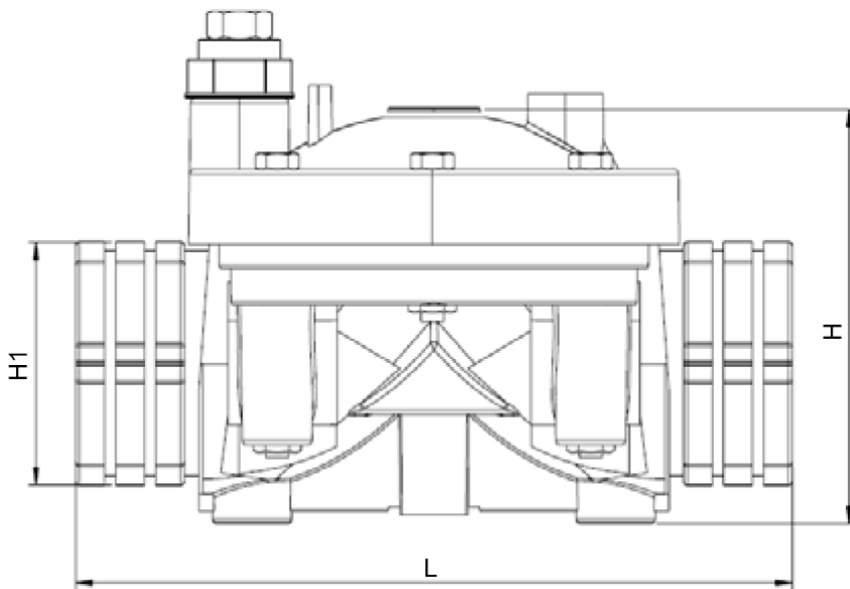


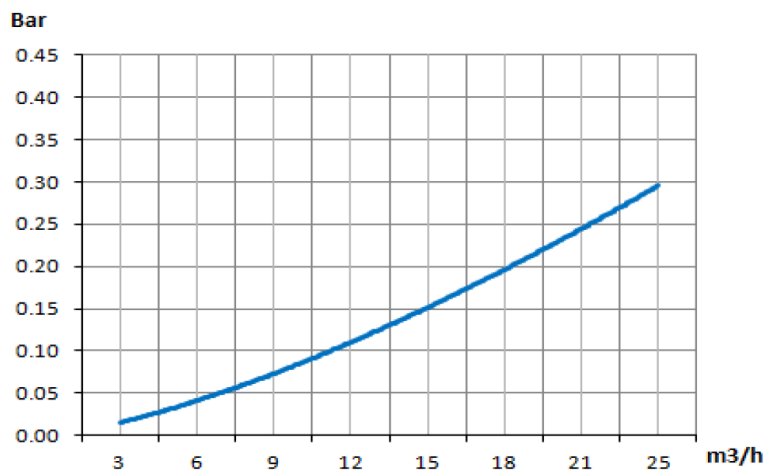
## 2" Electric Control Valve

Nylon w/ AC Solenoid - FNPT



<b>Size</b>	2"
<b>Connection</b>	NPT
<b>Max Flow</b>	176 GPM
<b>Max Working Pressure</b>	145 PSI
<b>Minimum Pressure</b>	10 PSI
<b>Max Temperature</b>	140°F (60°C)

### Head Loss Chart: 3-way Electric Valve



<< Relationship between Flow and Head Loss >>

Horizontal Axis  $Q$  : Flow rate,  $1\text{m}^3/\text{h}=4.4\text{gpm(US)}$

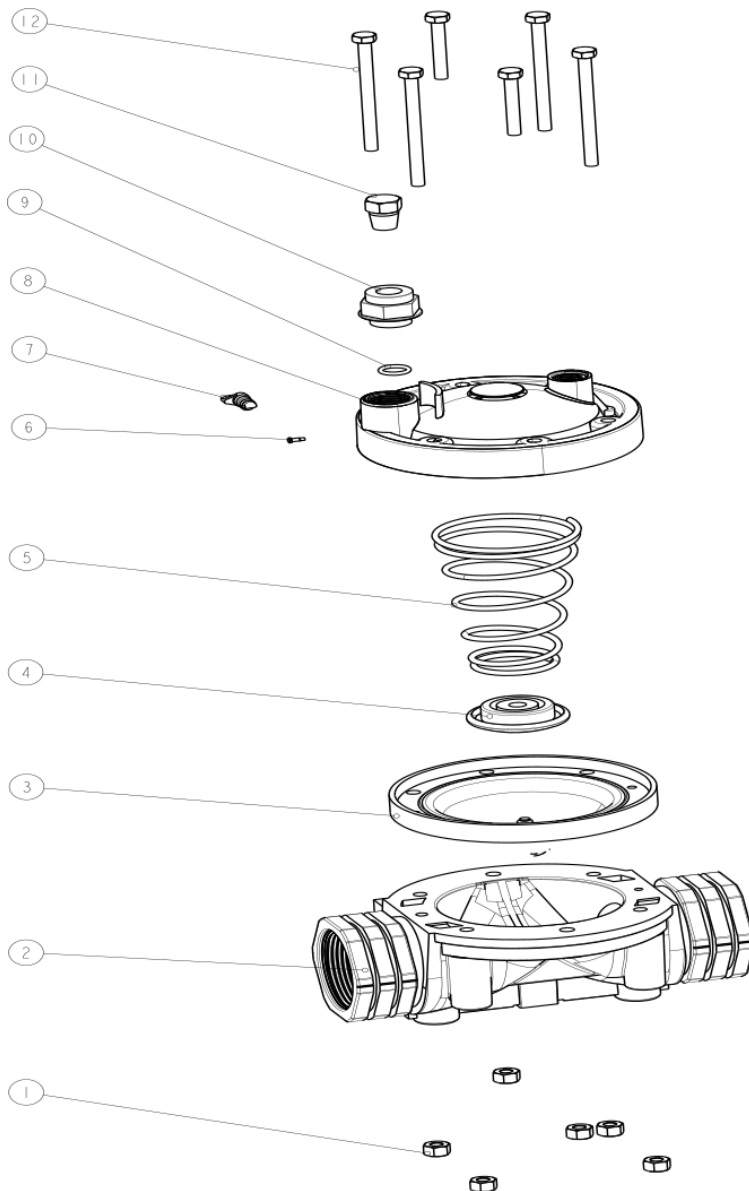
Vertical Axis  $\Delta H$  : Head loss,  $1\text{Bar}=14.5\text{Psi}$

### Dimensions

Size	L		H1		H	
in.	in.	mm	in.	mm	in.	mm
1-1/2"	7.5	190	2.4	61	4.1	104
2"	7.9	200	2.9	75	4.1	104

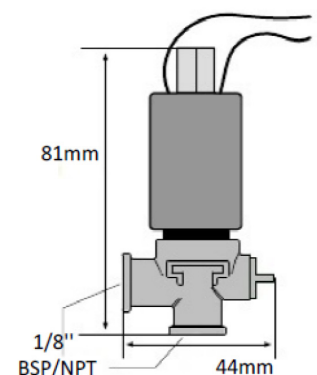
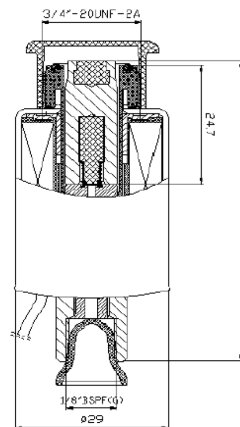
## 2" Electric Control Valve

Nylon w/ AC Solenoid - FNPT



### Materials List

No.	Part Name	Material
1	Hex Nuts	304 SST
2	Valve Body	Reinforced PA66
3	Diaphragm	NR
4	Spring Seat	POM
5	Spring	304 SST
6	Latch	Brass
7	Manual Override Switch	POM
8	Valve Bonnet	Reinforced PA66
9	O-Ring	NBR
10	Adapter	Reinforced PA66
11	Screw Plug	Reinforced PA66
12	Bolts	304 SST



### Solenoid

Solenoid	Wire Color	Frequency	Current (A)	
			Inrush	Holding
3way N.C. 24VAC	Red/Blue	50 Hz	0.17	0.17
		60 Hz	0.16	0.16